

The background of the slide is a photograph of an industrial facility. A worker wearing a hard hat and a high-visibility vest is working on a large, red industrial pump or valve system. The system is complex, with various pipes, valves, and a control panel. The scene is lit with warm, yellowish light, and there are metal structures and stairs visible in the background. The overall image has a professional, industrial feel.

# ROTA FLOW

**Solutions don't  
have to be  
complicated!**

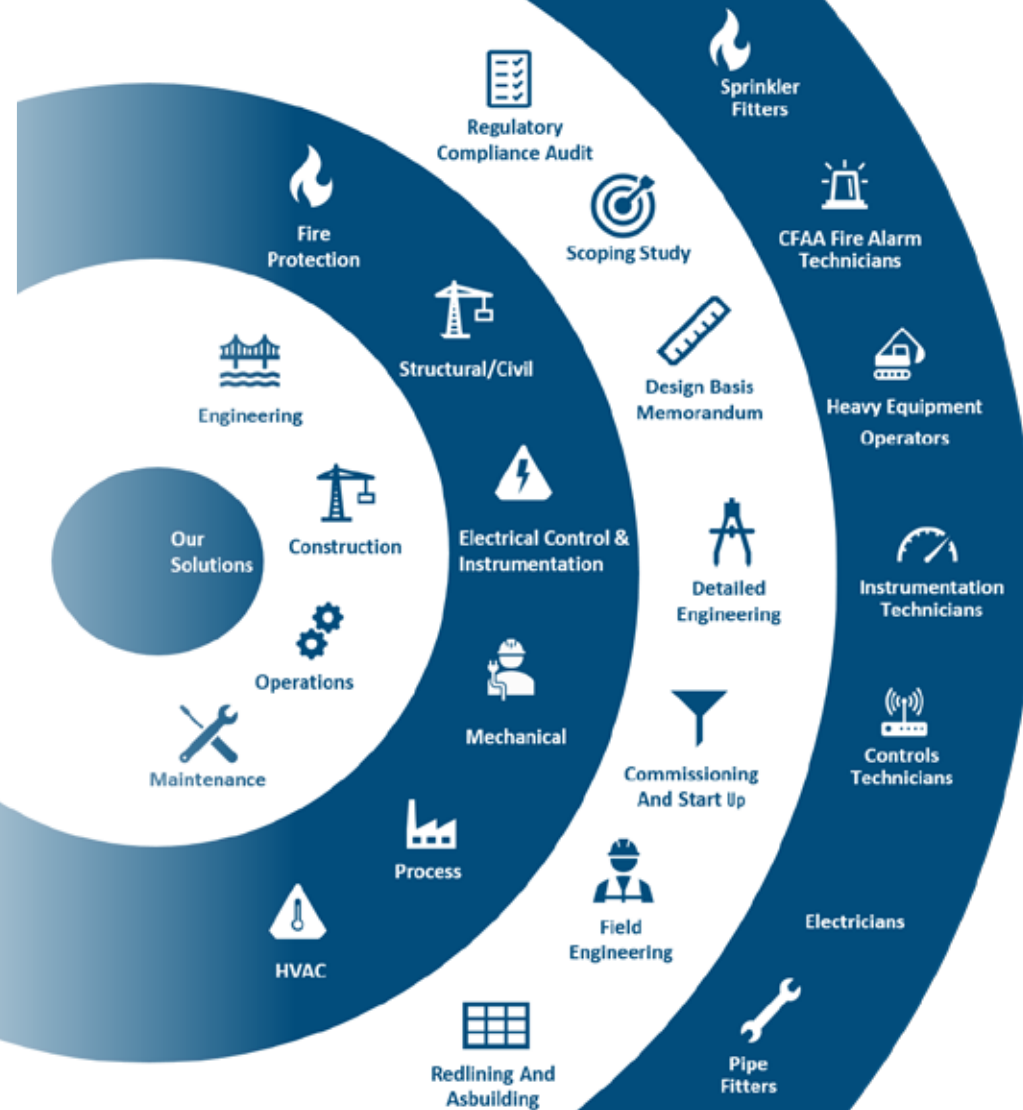
[rotaflow.ca](http://rotaflow.ca)



## END TO END SOLUTIONS

Rotaflow is an engineering, procurement, construction and maintenance company specialized in fire protection and industrial utility. We offer end to end design-build, retrofit and maintenance solutions that are unique to your site's problems.

**Over the course of the past 25 years, we have successfully completed more than 700 industrial projects across Alberta.**





## // Core Purpose

## // Core Values

**Safety first****One team spirit****Customer centric****Continuous improvement****Accountable**

# TO PROTECT LIFE AND ASSETS.

## // Proven Process

**01  
Synchronize**

Before we mobilize our resources, we want to make sure we're solving the right problem. By taking a hands-on approach, we can get to the root cause of the issues.

**02  
Customize**

Since no two problems are the same, every project warrants a tailored solution to optimize outcomes. Each solution needs the right people, the right systems, and the right components.

**03  
Realize**

With our engineering-first mindset, we can apply our project management expertise to delivering a successful project. Using proven principles, we can ensure transparency and accountability throughout the project.

**04  
Harmonize**

We want to empower your teams with the knowledge they need to maximize our solution. We will leave you with information that is organized and easy to reference, so you can go back to focusing on your core business.

# WHY CHOOSE US

**We have the right people, experience and tools to tackle projects of any size.**

- Excavators
- Loaders
- Shoring box
- HDPE - Fuser
- Fleet of 30 trucks
- On site stock, tool-crib and laydown
- Warehouse



**We have specialized teams in both Edmonton and Fort McMurray locations including:**

- Professional Engineers
- NFPA Certified Fire Protection Specialists
- CFFA Fire Alarm Technicians
- Red Seal and Master Electricians
- LEED Green Associates
- Journeyman Sprinkler and Pipe Fitters
- Journeyman Millwrights
- Heavy Equipment Operators
- HSE Advisors and Safety Codes Officers





# FIRE PROTECTION

**Rotaflow is a one shop solution to all your fire protection system needs. We have expertise in:**

- Fire Water Systems
- Foam Suppression Systems
- Clean Agent, CO2 and Dry Chemical Suppression Systems
- Fire Alarm Systems

We are one of a handful of companies with ULC fire alarm testing certification within Alberta. Our designers and technicians have received manufacturer trainings on variety of suppression systems and are well versed in Alberta Building and Fire Codes as well as various NFPA and ULC Standards.



Hydrants Annual Flow testing and inspection



Annual flow testing and inspection of a foam suppression system



Installation of a fire water pump

# INDUSTRIAL UTILITIES

Industrial utility systems can often present challenges that aren't visible at the surface, and the impact can be destructive to your operations. With our engineering and field expertise, we can find the root cause of your issues and solve them effectively, rather than just patching them up.

We have maintained diesel, natural gas, potable water and sewage systems, on large industrial sites. Whether you need exploratory work, leak detection and excavation for the existing system, or installation and fusing of new HDPE piping, we have the right team and equipment to find the right solution for your system needs.





# ENGINEERING SERVICES

**Whether you need a regulatory code compliance audit, a scoping study or a detailed design, our multi-discipline team of engineers (Electrical, Instrumentation & Controls, Process, Mechanical & HVAC, Civil & Structural and Fire Protection) can offer you customized solutions.**

Using AFT software, we can offer a precise hydraulic simulation model of any compressible fluid system (water, diesel, bitumen etc.) in both steady state and transient modes.

Using Janus Fire System software, we can design your gaseous or dry chemicals fire suppression systems.

Your electricity generation and distribution system or industrial power system can be effectively modeled and optimized using etap software.

Using BuildingReports mobile and online tools, your site's audit or Inspection report can be created in real time.

# FABRICATION

As part of Rotaflow's commitment to providing on-time and cost-effective solutions to our clients, we began the process of obtaining our ABSA certification for stainless steel and process pipe fabrication in 2019. Rotaflow received their Certificate of Authorization Permit in October 2020 and has a handful of trained welders deployed and ready to serve you with fabrication services. With our vendor network and a team of professional welders, we can deliver cost-effective solutions for your time-sensitive projects across all phases of the project.

Since receiving our certification, Rotaflow has completed several projects that were completed in our warehouses in Fort McMurray and Edmonton with the capabilities to fabricate on-site as well. A recent project included the design and fabrication of an inergen gas rack for a clean agent fire protection system.





# WEIGHTS & MEASUREMENTS

**As a new addition to our services, Rotaflow has become a registered organization with Measurement Canada.**

Measurement Canada closely monitors the accuracy of measuring devices such as gas pumps, meters and scales through a variety of inspection and compliance strategies. Rotaflow specializes in the inspection and calibration of metering and weighing devices in accordance with these regulations.

Services we provide in the retail petroleum industry for Gas stations and card lock sites are listed below.

- Inspection & Certification
- Preventive Maintenance
- Site Quality Inspection

We also provide inspections on non-automatic weighing devices (NAWD's) specifically on Class III HD scales of up to 100,000 KG capacity.



## CASE STUDY: LOON LAKE FWPH

**A recent example of the firewater system construction & commissioning project completed by Rotaflow is Loon Lake Firewater Pump House in Suncor Base Plant. The scope of the project included:**

- Replacement of three existing fire water pump system each including gear drives, diesel engines, pump controllers, diesel fuel storage tanks and associated equipment.
- Modification of existing pump house building, pump pad structure, all piping auxiliaries, wiring controls, programming and upgrade of existing Electrical Power Distribution System and Control System (PLC replacement)
- System commissioning and turn-over





## CASE STUDY: KRAKEN DREDGE

The Canadian government regulates tailings pond recovery in the Oil Sands by establishing a set of criteria for minimum recovery at each site, through “Directive 85.” Making the recovery of tailings increasingly difficult is the amount organic matter, or “muskeg,” that is found in the ponds. The muskeg in the ponds frequently clogs dredge lines and prevents continuous operation.

Rotaflow partnered with Hagler Systems to deliver the electrical instrument and controls design for a robust dredge that could stand up to the muskeg and produce a flow of up to 6,000+ m<sup>3</sup>/hr!

The Kraken is not only Suncor’s first electrically-driven dredge; it is also the first dredge to use shredder technology to manage underwater debris.



## AFFILIATIONS





## CLIENTS



# Follow us on social media

## @rotaflow

 [linkedin.com/company/rotaflow](https://linkedin.com/company/rotaflow)  
 [facebook.com/rotaflow](https://facebook.com/rotaflow)

 [instagram.com/rotaflow](https://instagram.com/rotaflow)  
 [twitter.com/rotaflow](https://twitter.com/rotaflow)





# NOTES

---

---

---

---

---

---

---

---

---

---



**Headquarter office:**

6707 59 st NW  
Edmonton, AB T6B 3P8  
Tel: 780-469-1220  
Email: [enquiries@rotaflow.ca](mailto:enquiries@rotaflow.ca)

**Wood Buffalo Regional office:**

41-925 Memorial Drive  
Fort McMurray, AB  
Tel: 587-258-8188